

**WINDOW FLASHING SYSTEM
INSTALLATION INSTRUCTIONS**

FOR

**PUNCHED WINDOW OPENINGS
WITH LOOSE STEEL LINTELS IN
BUILDING ENCLOSURE SYSTEMS
WITH AIR AND VAPOR BARRIER
SYSTEMS AND CAVITY INSULATION**

Offered By:

EXO-TEC Manufacturing, Inc.

22 Washington Street

Stoughton, MA 02072

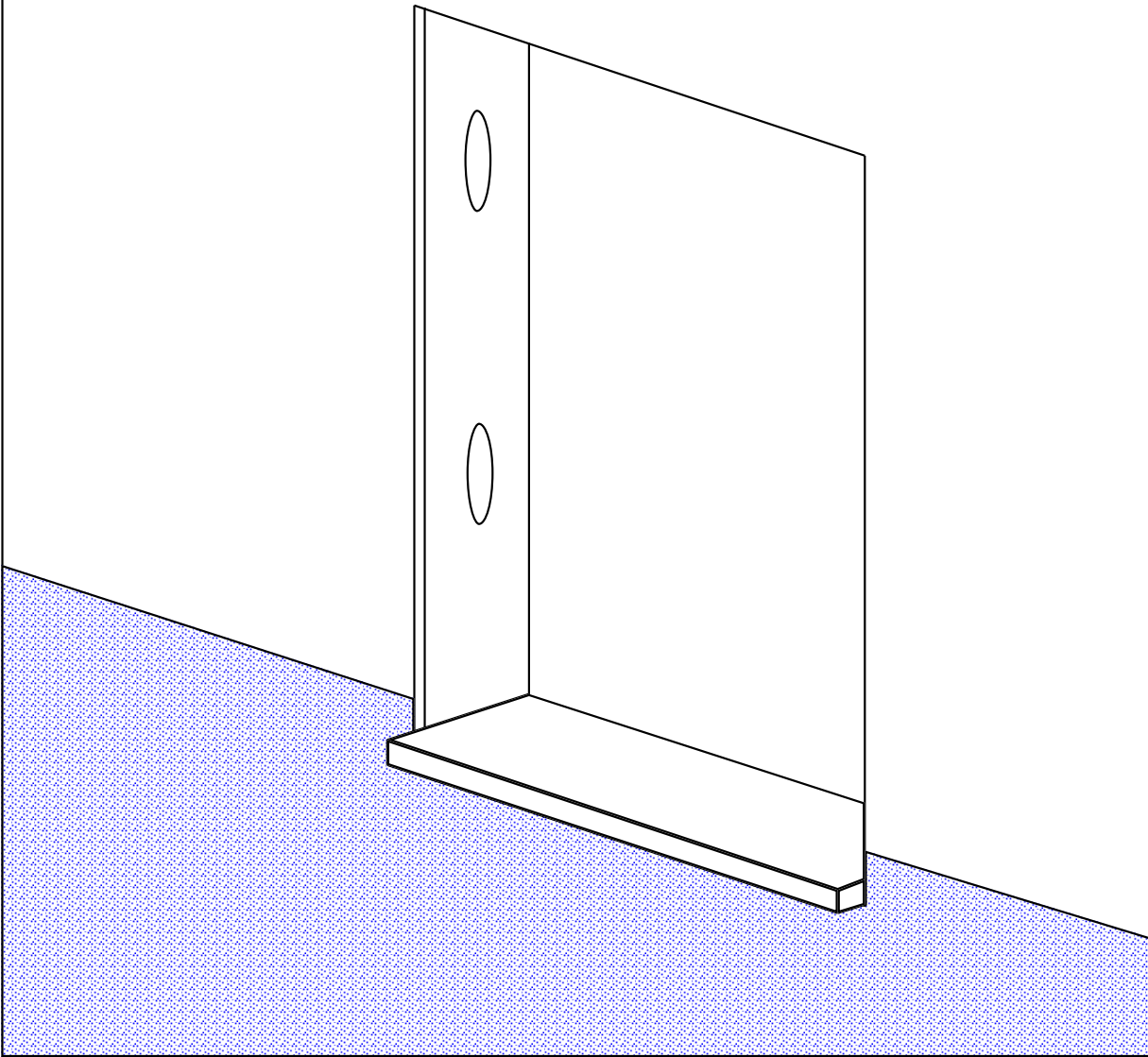
(781) 344-9794

Fax (781) 344-9823

<http://www.exo-tec.biz>

E-Mail: len@exo-tec.biz

1.) INSTALL THE WATER, AIR
OR AIR / VAPOR BARRIER
TO VICINITY OF THE
WINDOW SILL HEIGHT.



EXO-TEC MANUFACTURING, INC.

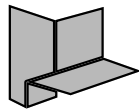
294 PLEASANT ST. SUITE 203A, STOUGHTON, MA 02072

(781) 344-9794 FAX (781) 344-9823

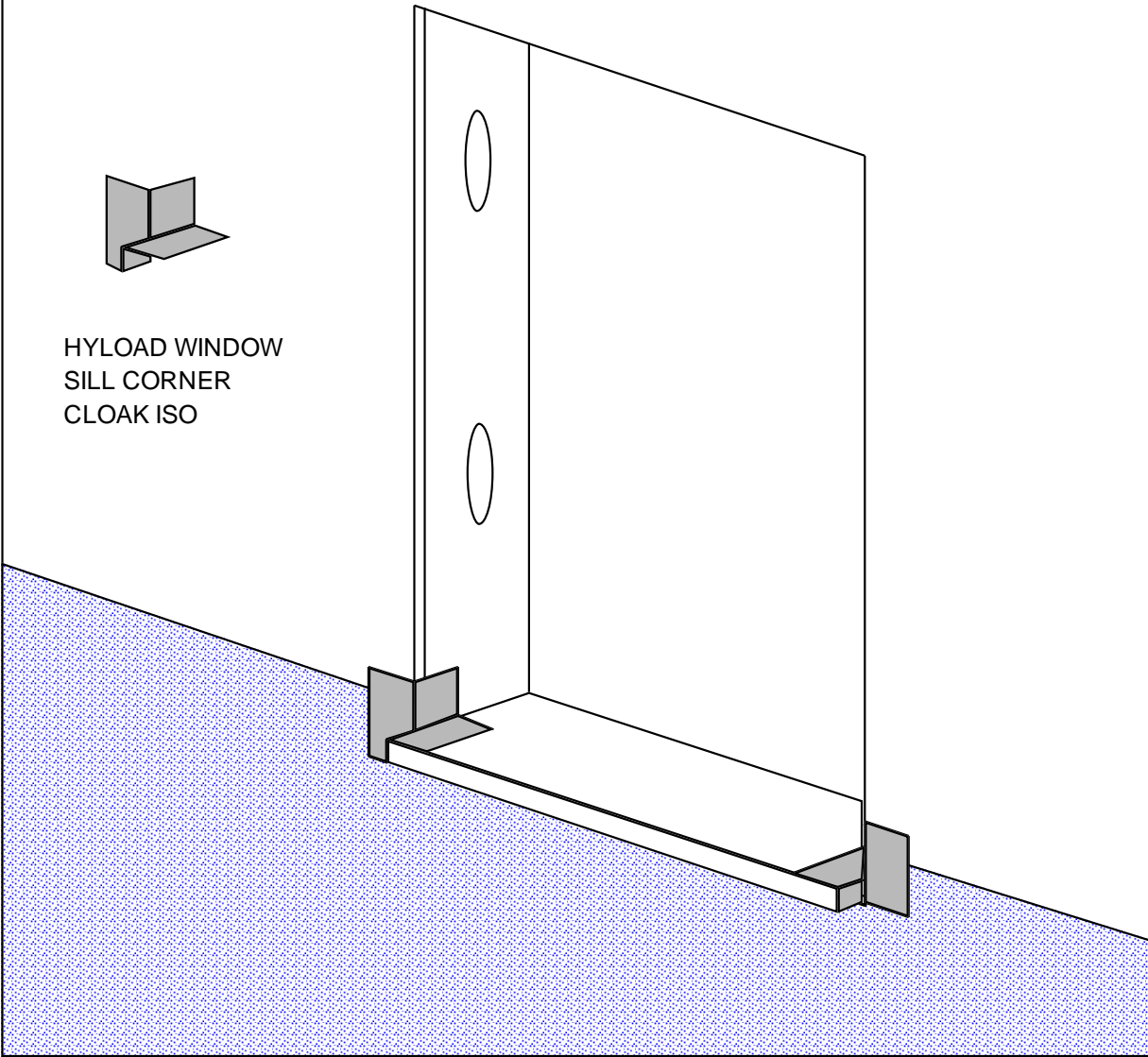
www.exo-tec.biz

WINDOW FLASHING SYSTEM INSTALLATION: STEP 1

2.) INSTALL HYLOAD WINDOW
SILL CORNER CLOAKS SET IN A
FULL BED OR A CONTINUOUS
BEAD OF HYLOAD ADHESIVE.



HYLOAD WINDOW
SILL CORNER
CLOAK ISO



EXO-TEC MANUFACTURING, INC.

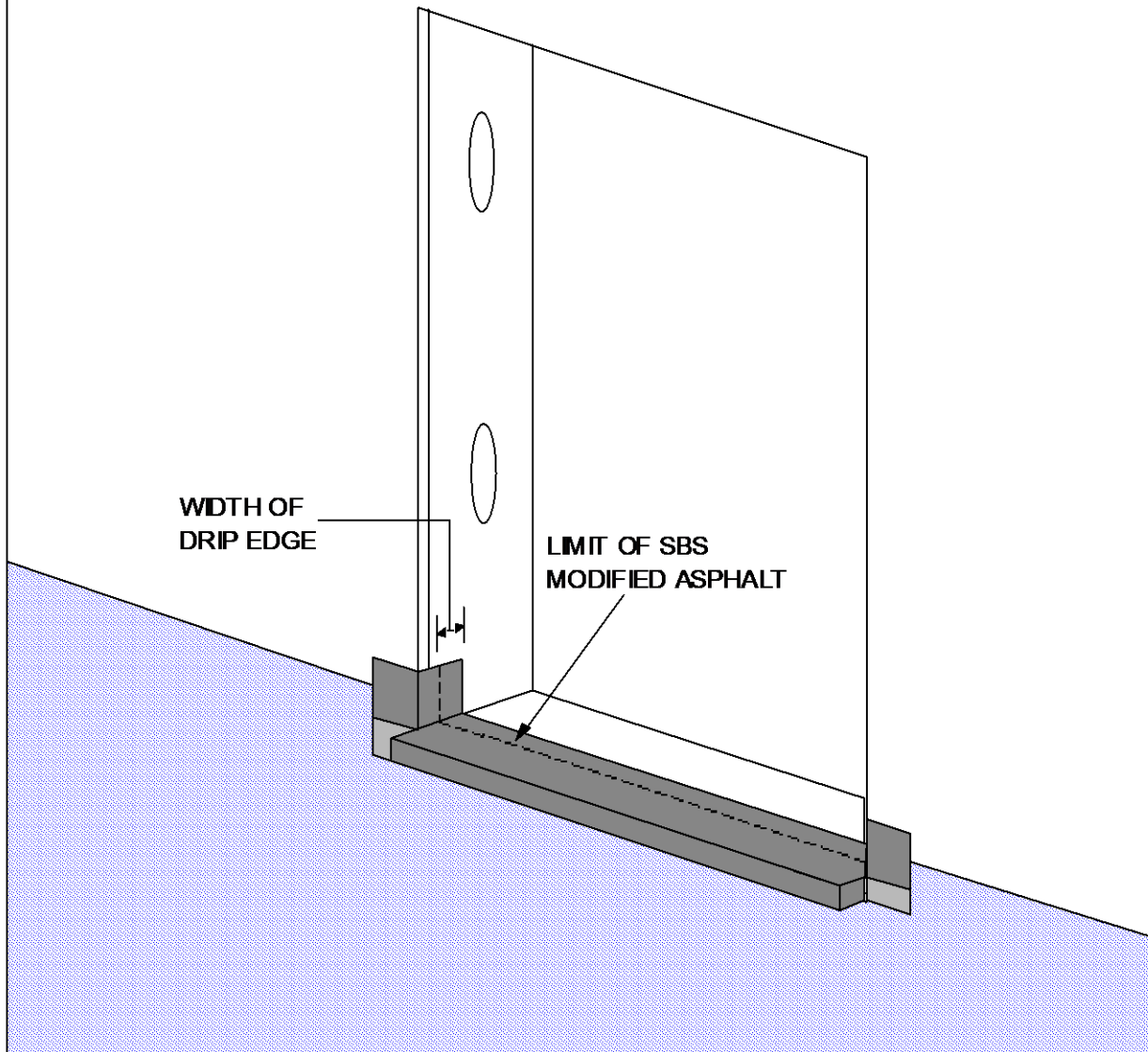
294 PLEASANT ST. SUITE 203A, STOUGHTON, MA 02072

(781) 344-9794 FAX (781) 344-9823

www.exo-tec.biz

WINDOW FLASHING SYSTEM INSTALLATION: STEP 2

3.) **INSTALL HYLOAD S/A FLASHING WITH DRIP EDGE AT THE WINDOW SILL WITH THE INNER EDGE OF THE DRIP EDGE AT THE APPROXIMATE LOCATION OF THE BACK EDGE OF THE WINDOW.**

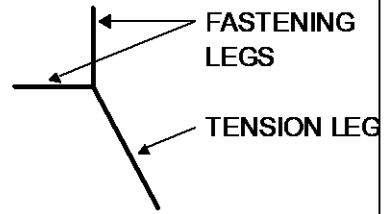


EXO-TEC MANUFACTURING, INC.
294 PLEASANT ST. SUITE 203A, STOUGHTON, MA 02072

(781) 344-9794 FAX (781) 344-9823
www.exo-tec.biz

WINDOW FLASHING SYSTEM INSTALLATION: STEP 3

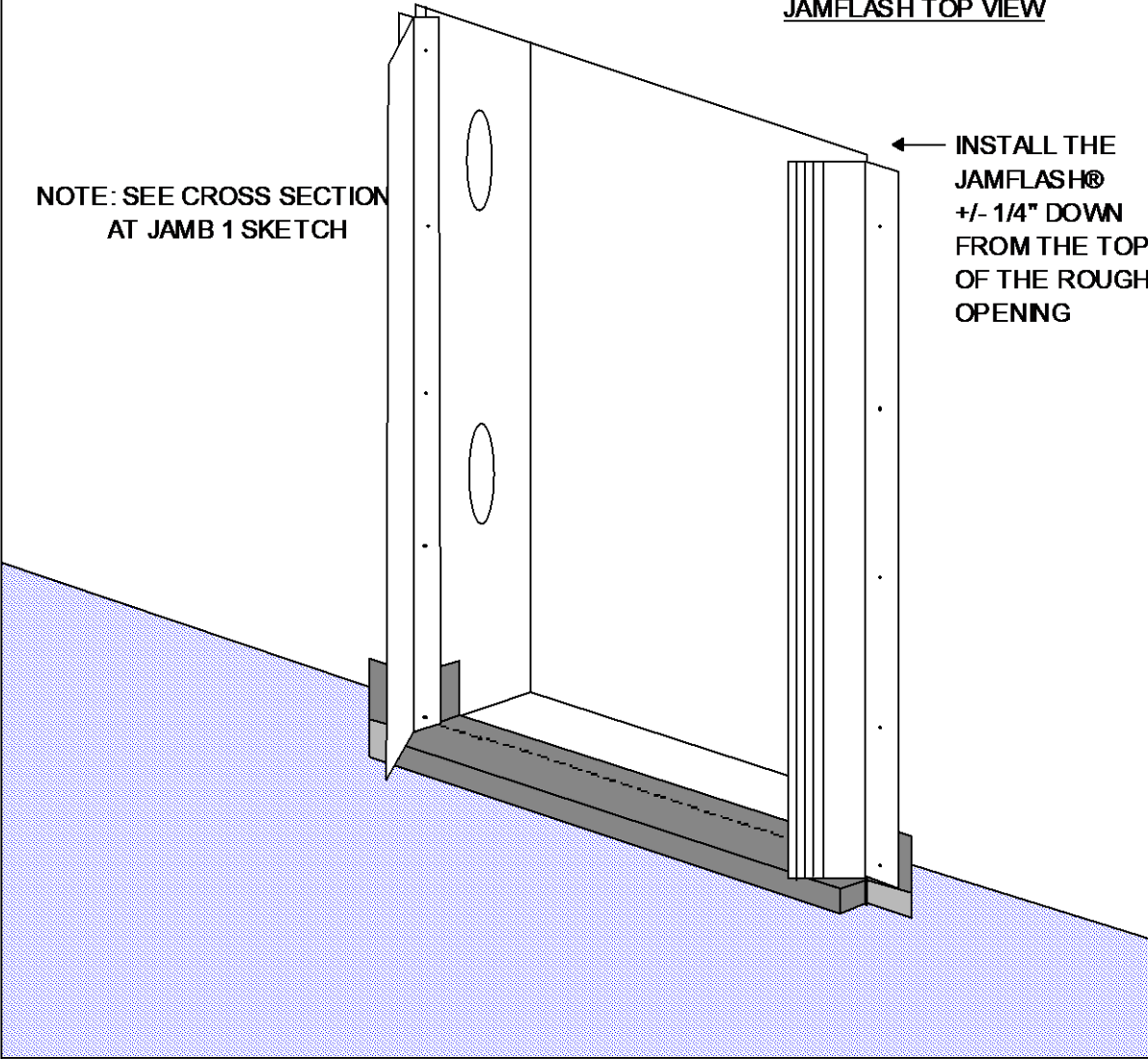
4.) **INSTALL JAMFLASH® BY SEATING IT TIGHTLY TO THE JAMB AND SHEATHING THEN FASTENING IT WITH CORROSION RESISTANT, PANCAKE HEAD, SELF-TAPPING SCREWS AT 12" O.C. ON BOTH FASTENING LEGS**



JAMFLASH TOP VIEW

NOTE: SEE CROSS SECTION AT JAMB 1 SKETCH

INSTALL THE JAMFLASH® +/- 1/4" DOWN FROM THE TOP OF THE ROUGH OPENING



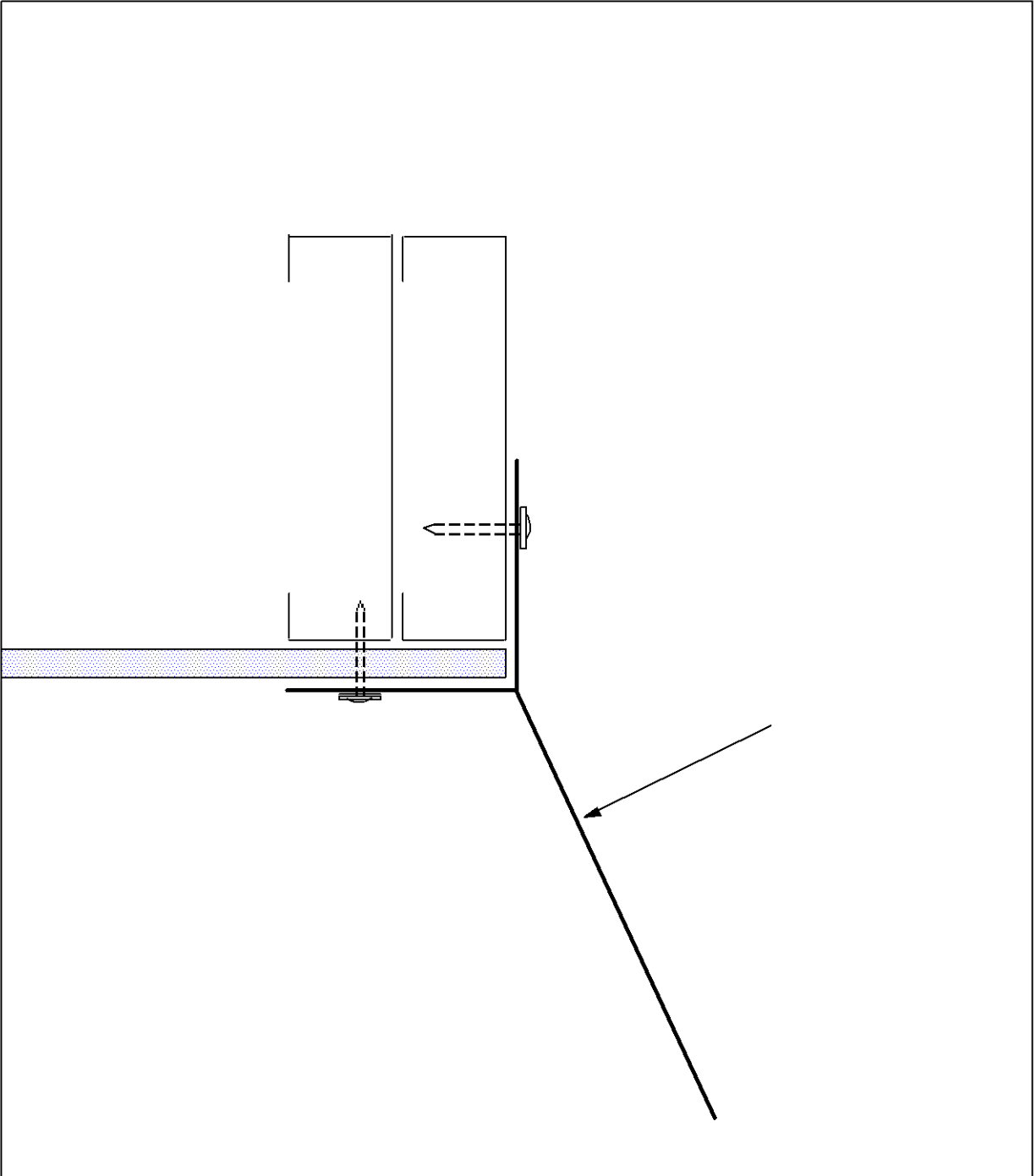
EXO-TECD MANUFACTURING, INC.

(781) 344-9794 FAX (781) 344-9823

294 PLEASANT ST. SUITE 203A, STOUGHTON, MA 02072

www.exo-tec.biz

WINDOW FLASHING SYSTEM INSTALLATION: STEP 4



EXO-TEC MANUFACTURING, INC.

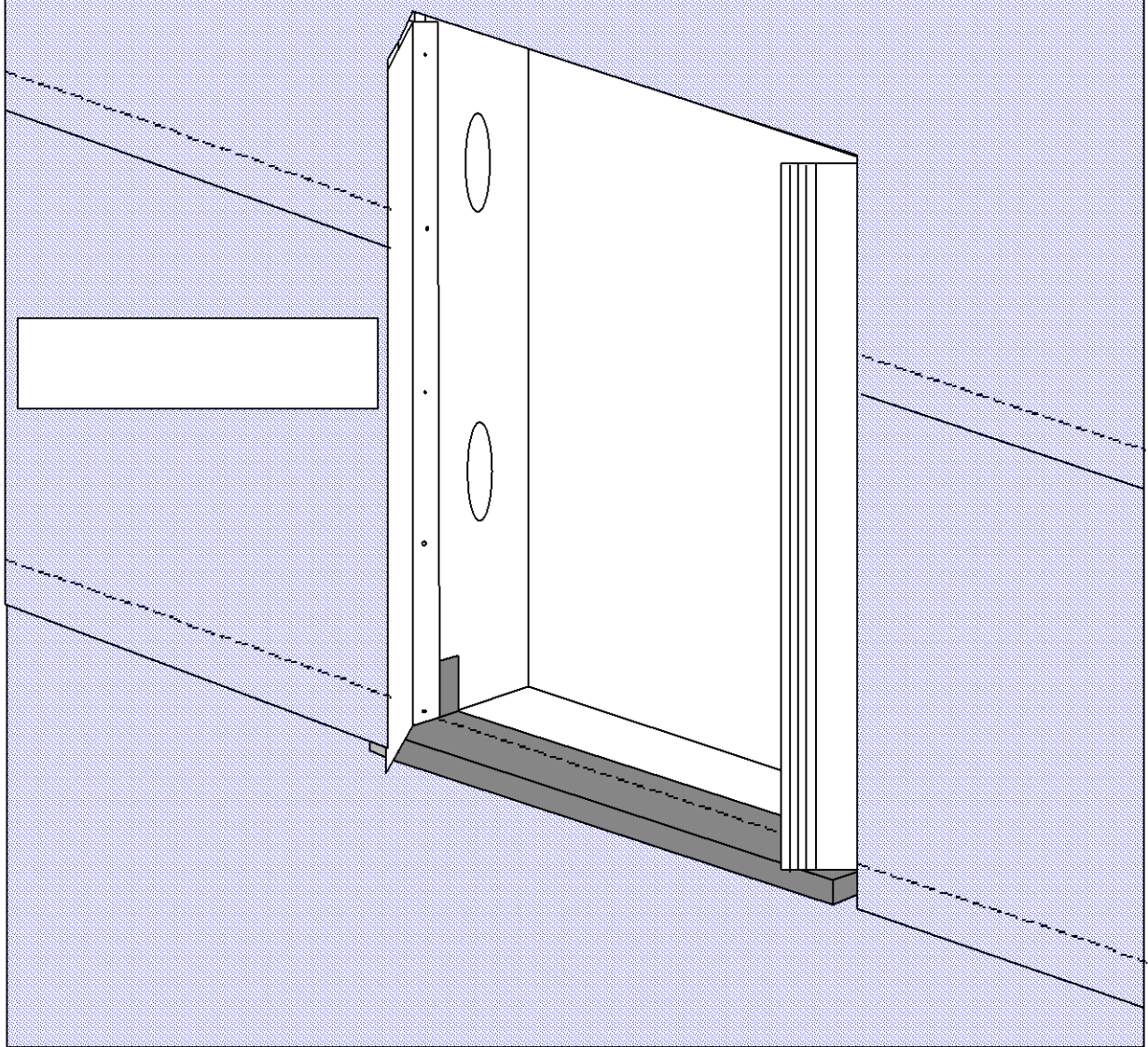
294 PLEASANT ST. SUITE 203A, STOUGHTON, MA 02072

(781) 344-9794 FAX (781) 344-9823

www.exo-tec.biz

WINDOW FLASHING SYSTEM INSTALLATION: SECTION AT JAMB 1

5.) INSTALL THE WATER, AIR
OR AIR / VAPOR BARRIER UP
AND OVER THE WINDOW. LAP
OVER THE CAVITY FACE
FASTENING LEG OF THE
JAMFLASH.



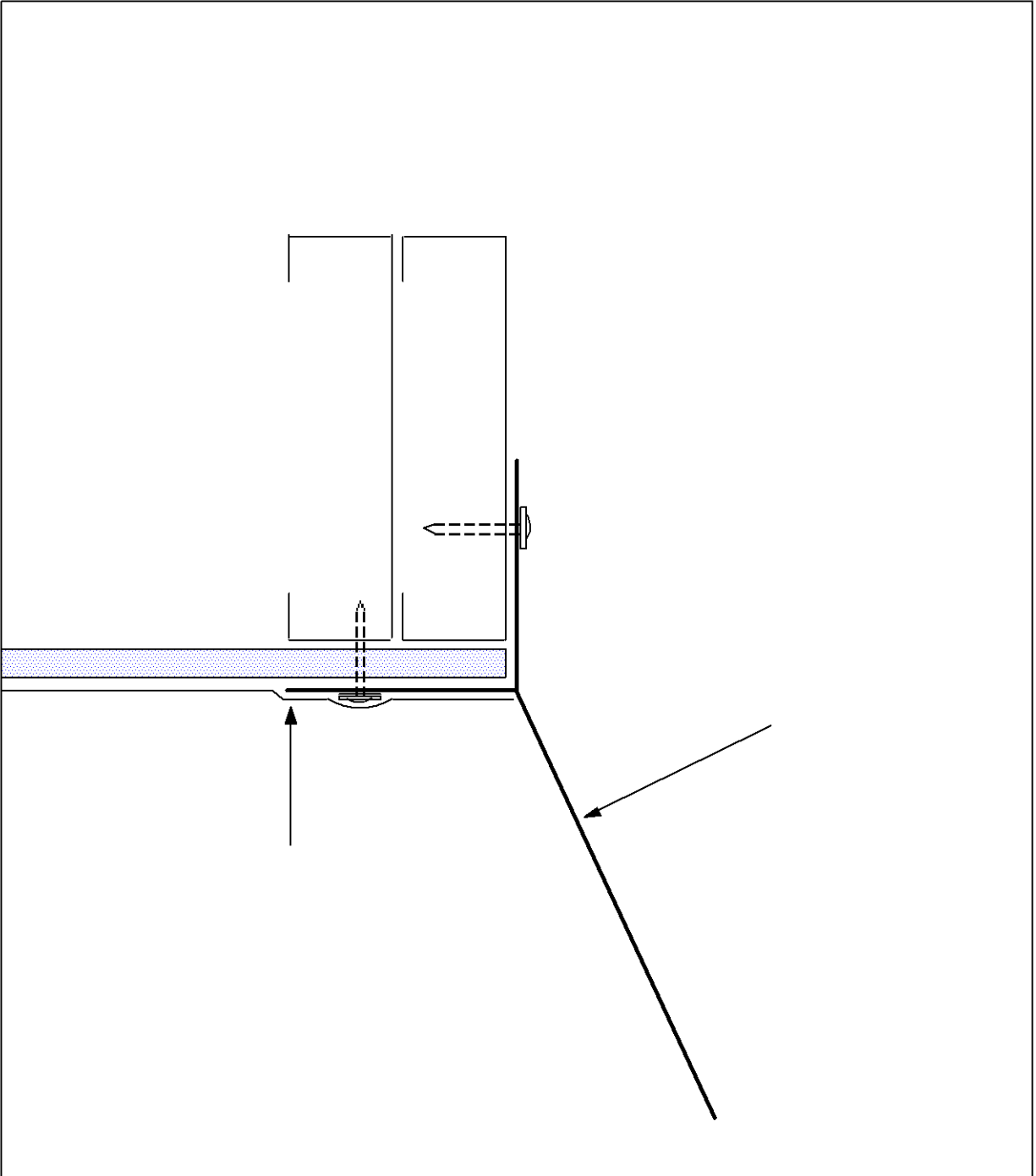
EXO-TEC MANUFACTURING, INC.

294 PLEASANT ST. SUITE 203A, STOUGHTON, MA 02072

(781) 344-9794 FAX (781) 344-9823

www.exo-tec.biz

WINDOW FLASHING SYSTEM INSTALLATION: STEP 5



EXO-TEC MANUFACTURING, INC.

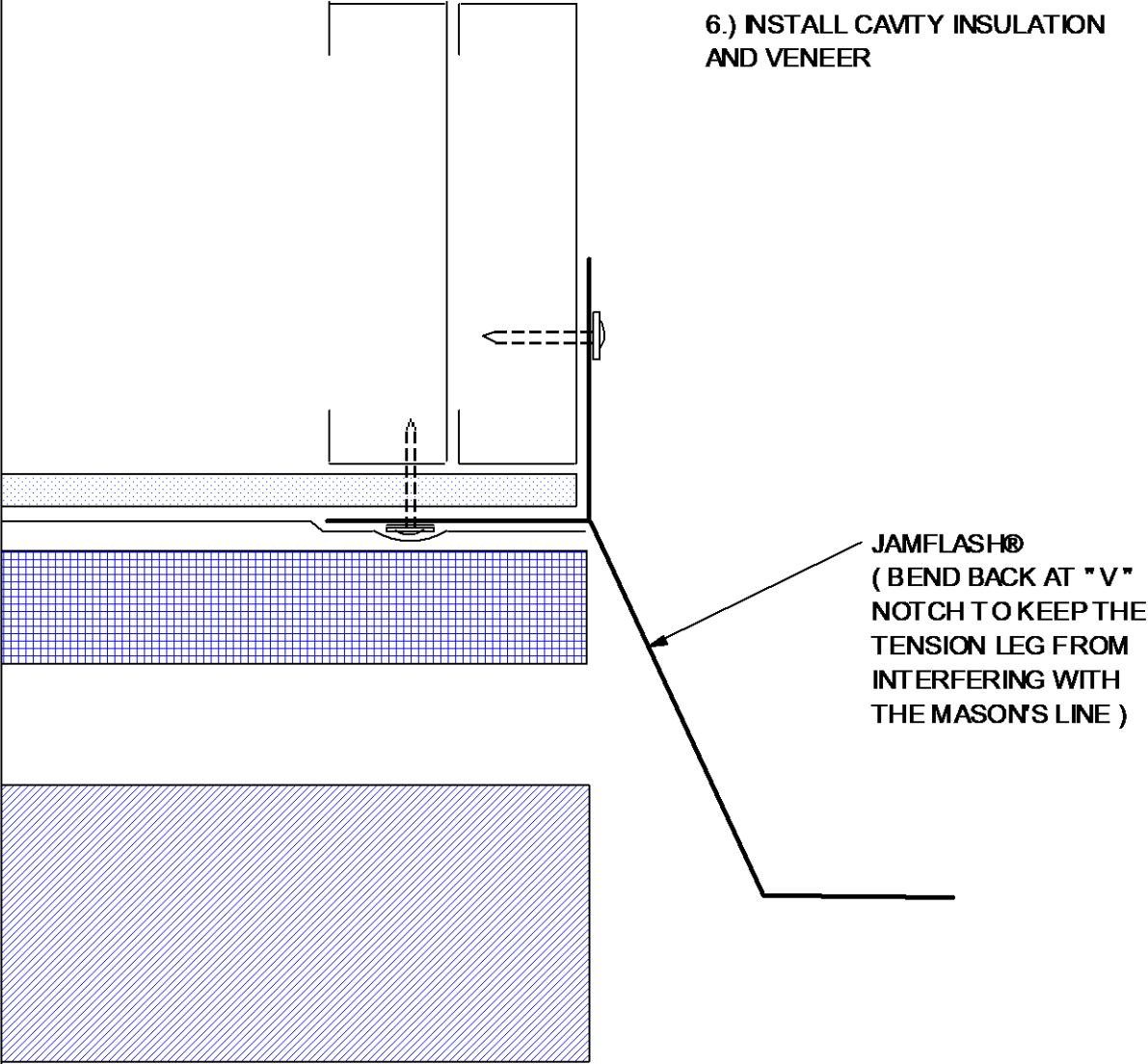
294 PLEASANT ST. SUITE 203A, STOUGHTON, MA 02072

(781) 344-9794 FAX (781) 344-9823

www.exo-tec.biz

WINDOW FLASHING SYSTEM INSTALLATION: SECTION AT JAMB 2

6.) INSTALL CAVITY INSULATION
AND VENEER

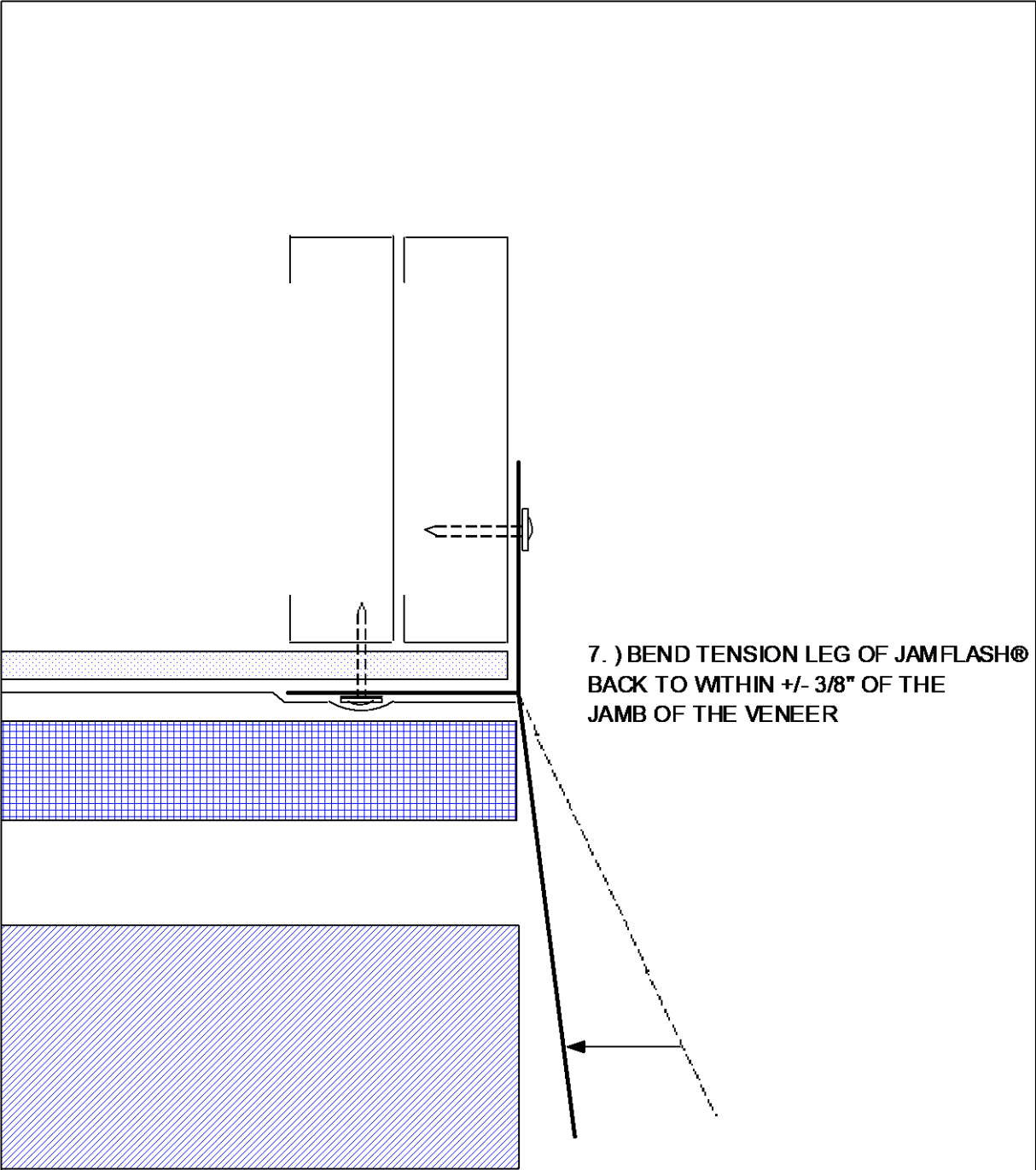


JAMFLASH®
(BEND BACK AT "V"
NOTCH TO KEEP THE
TENSION LEG FROM
INTERFERING WITH
THE MASON'S LINE)

EXO-TEC MANUFACTURING, INC.
294 PLEASANT ST. SUITE 203A, STOUGHTON, MA 02072

(781) 344-9794 FAX (781) 344-9823
www.exo-tec.biz

WINDOW FLASHING SYSTEM INSTALLATION: STEP 6



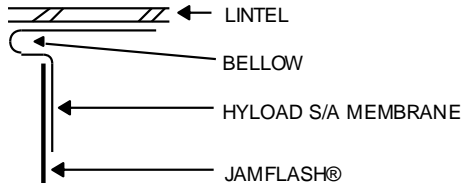
7.) BEND TENSION LEG OF JAMFLASH®
BACK TO WITHIN +/- 3/8" OF THE
JAMB OF THE VENEER

EXO-TEC MANUFACTURING, INC.
294 PLEASANT ST. SUITE 203A, STOUGHTON, MA 02072

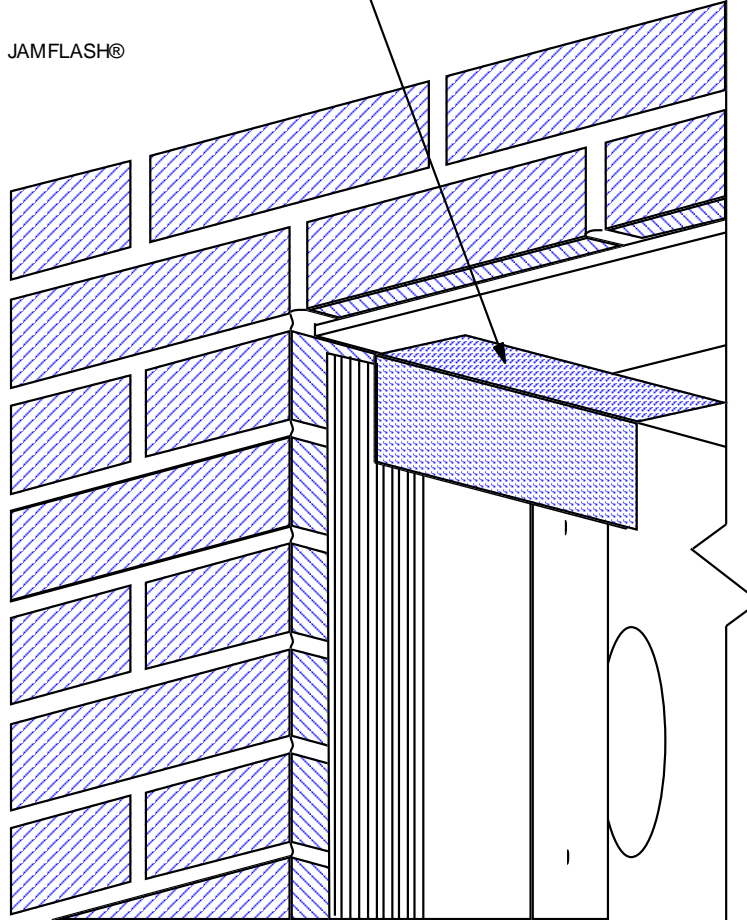
(781) 344-9794 FAX (781) 344-9823
www.exo-tec.biz

WINDOW FLASHING SYSTEM INSTALLATION: STEP 7

8.) APPLY A 6" WIDE STRIP OF HYLOAD SELF ADHERING MEMBRANE FLASHING TO THE JUNCTION OF THE JAMFLASH® AND THE LOOSE LINTEL AT THE HEAD OF THE OPENING. RELEASE THE PRESSURE ON THE JAMFLASH® TO ALLOW IT TO SPRING BACK TO ITS NATURAL SHAPE. A "BELLOW" WILL OCCUR IN THE HYLOAD FLASHING MEMBRANE AT THE 1/4" GAP BETWEEN THE TOP OF THE FLASHING AND BOTTOM OF THE LINTEL.

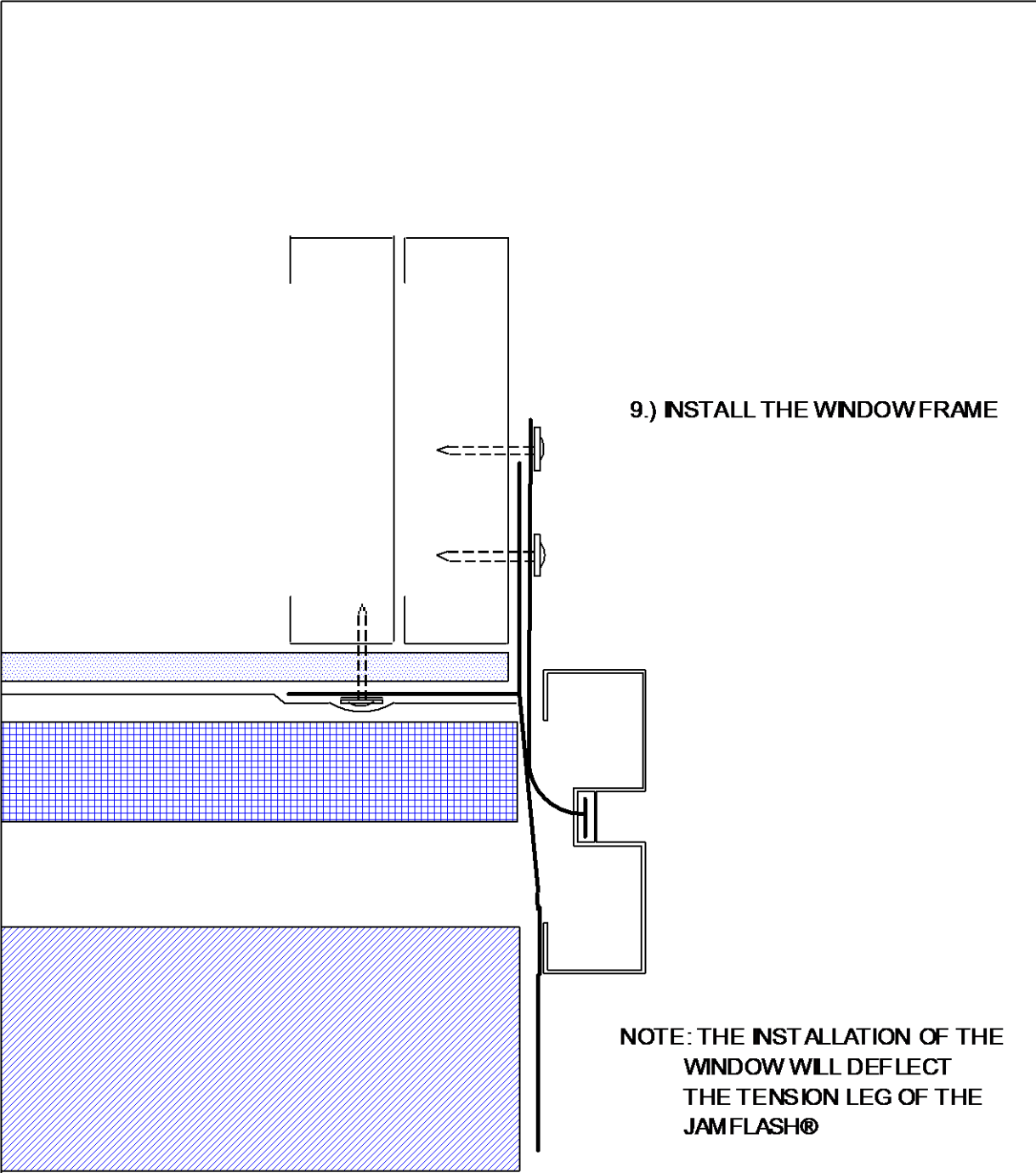


BELLOW DETAIL



EXO-TEC MANUFACTURING, INC. (781) 344-9794 FAX (718) 344-9823
294 PLEASANT ST. SUITE 203A STOUGHTON, MA 02072 www.exo-tec.biz

WINDOW FLASHING INSTALLATION: STEP 8



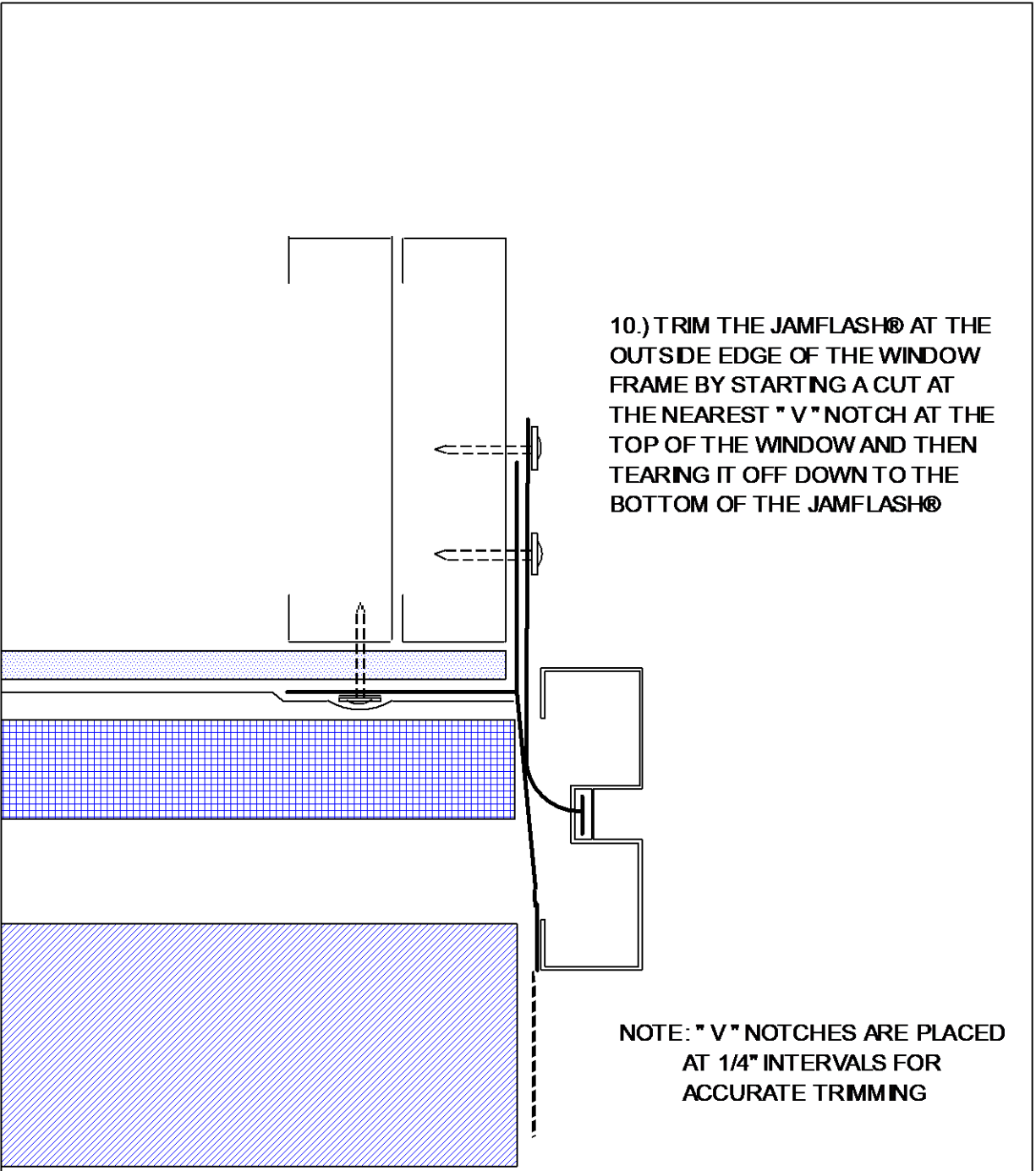
9.) INSTALL THE WINDOW FRAME

NOTE: THE INSTALLATION OF THE WINDOW WILL DEFLECT THE TENSION LEG OF THE JAMFLASH®

EXO-TEC MANUFACTURING, INC.
294 PLEASANT ST. SUITE 203A, STOUGHTON, MA 02072

(781) 344-9794 FAX (781) 344-9823
www.exo-tec.biz

WINDOW FLASHING SYSTEM INSTALLATION: STEP 9



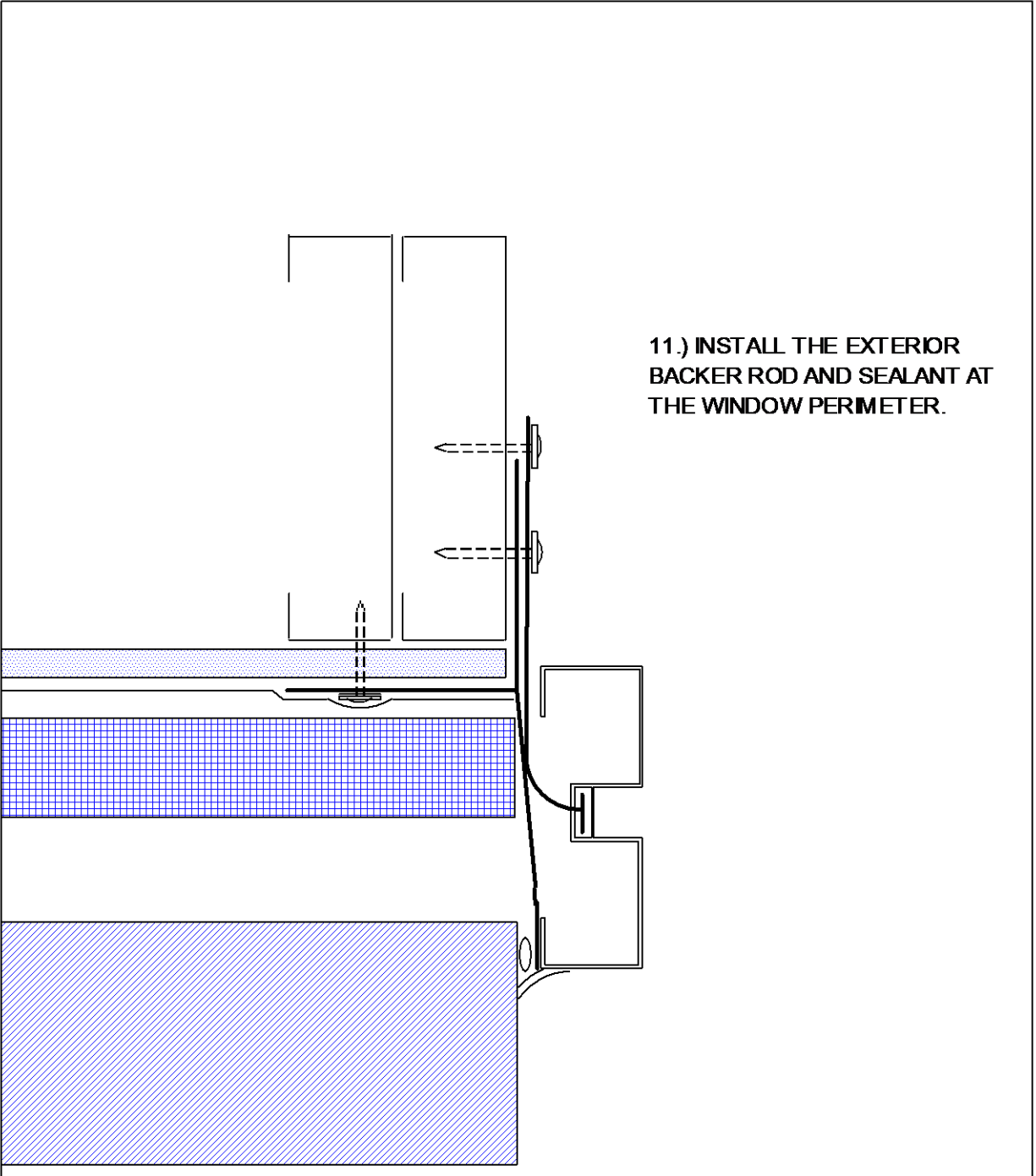
10.) TRIM THE JAMFLASH® AT THE OUTSIDE EDGE OF THE WINDOW FRAME BY STARTING A CUT AT THE NEAREST " V " NOTCH AT THE TOP OF THE WINDOW AND THEN TEARING IT OFF DOWN TO THE BOTTOM OF THE JAMFLASH®

NOTE: " V " NOTCHES ARE PLACED AT 1/4" INTERVALS FOR ACCURATE TRIMMING

EXO-TEC MANUFACTURING, INC.
294 PLEASANT ST. SUITE 203A, STOUGHTON, MA 02072

(781) 344-9794 FAX (781) 344-9823
www.exo-tec.biz

WINDOW FLASHING SYSTEM INSTALLATION: STEP 10

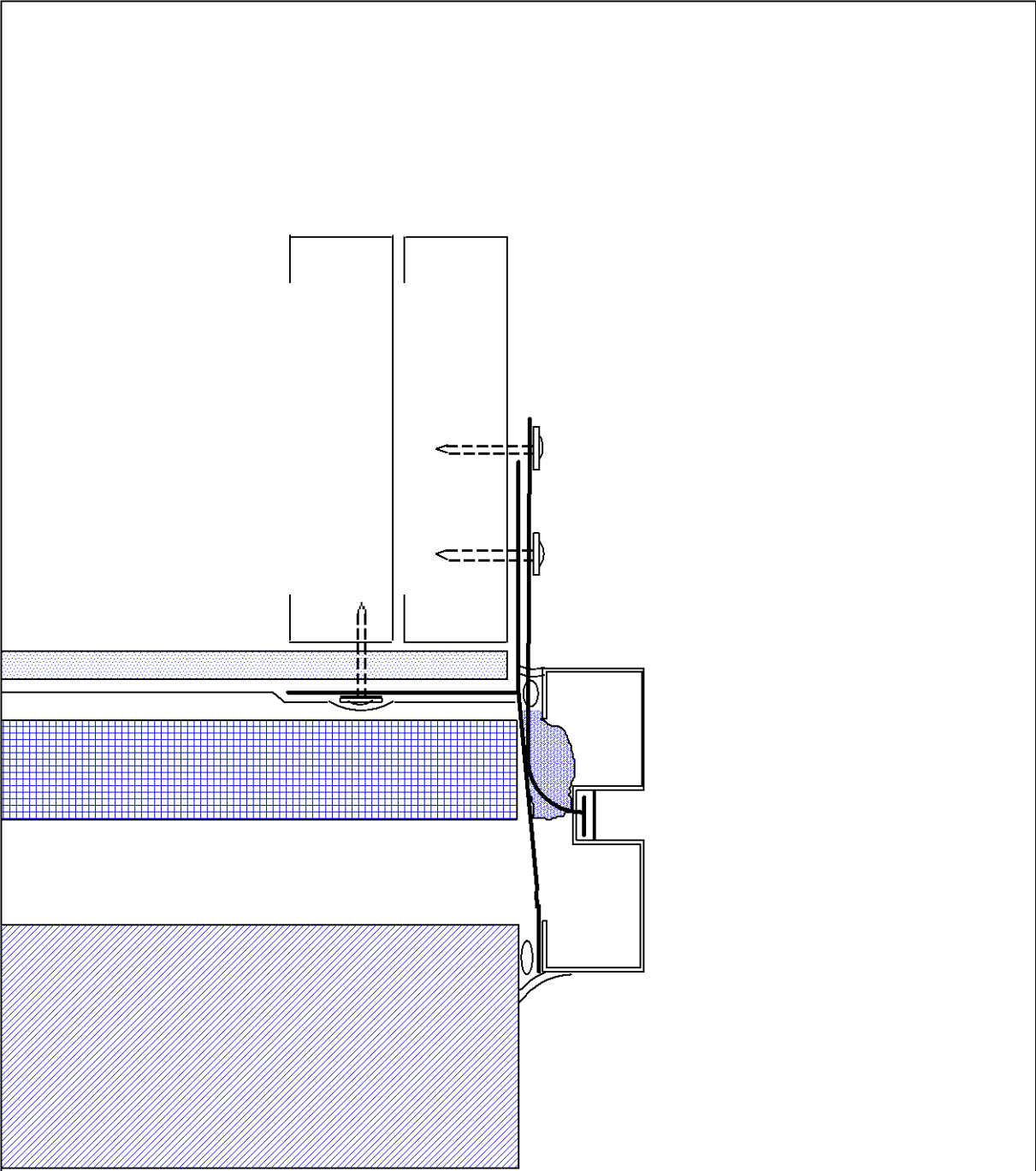


11.) INSTALL THE EXTERIOR
BACKER ROD AND SEALANT AT
THE WINDOW PERIMETER.

EXO-TEC MANUFACTURING, INC.
294 PLEASANT ST. SUITE 203A, STOUGHTON, MA 02072

(781) 344-9794 FAX (781) 344-9823
www.exo-tec.biz

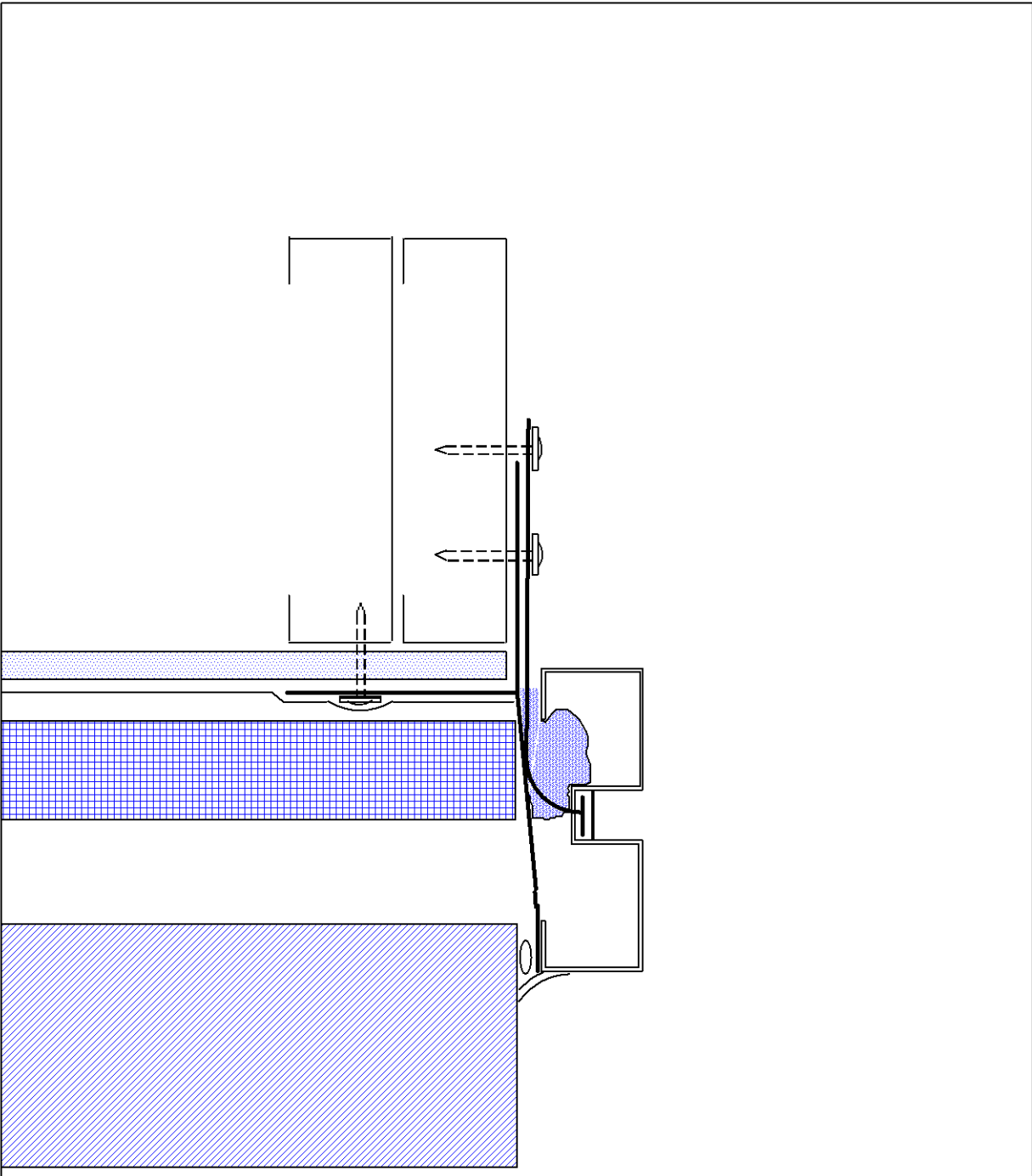
WINDOW FLASHING SYSTEM INSTALLATION: STEP 11



EXO-TEC MANUFACTURING, INC.
294 PLEASANT ST. SUITE 203A, STOUGHTON, MA 02072

(781) 344-9794 FAX (781) 344-9823
www.exo-tec.biz

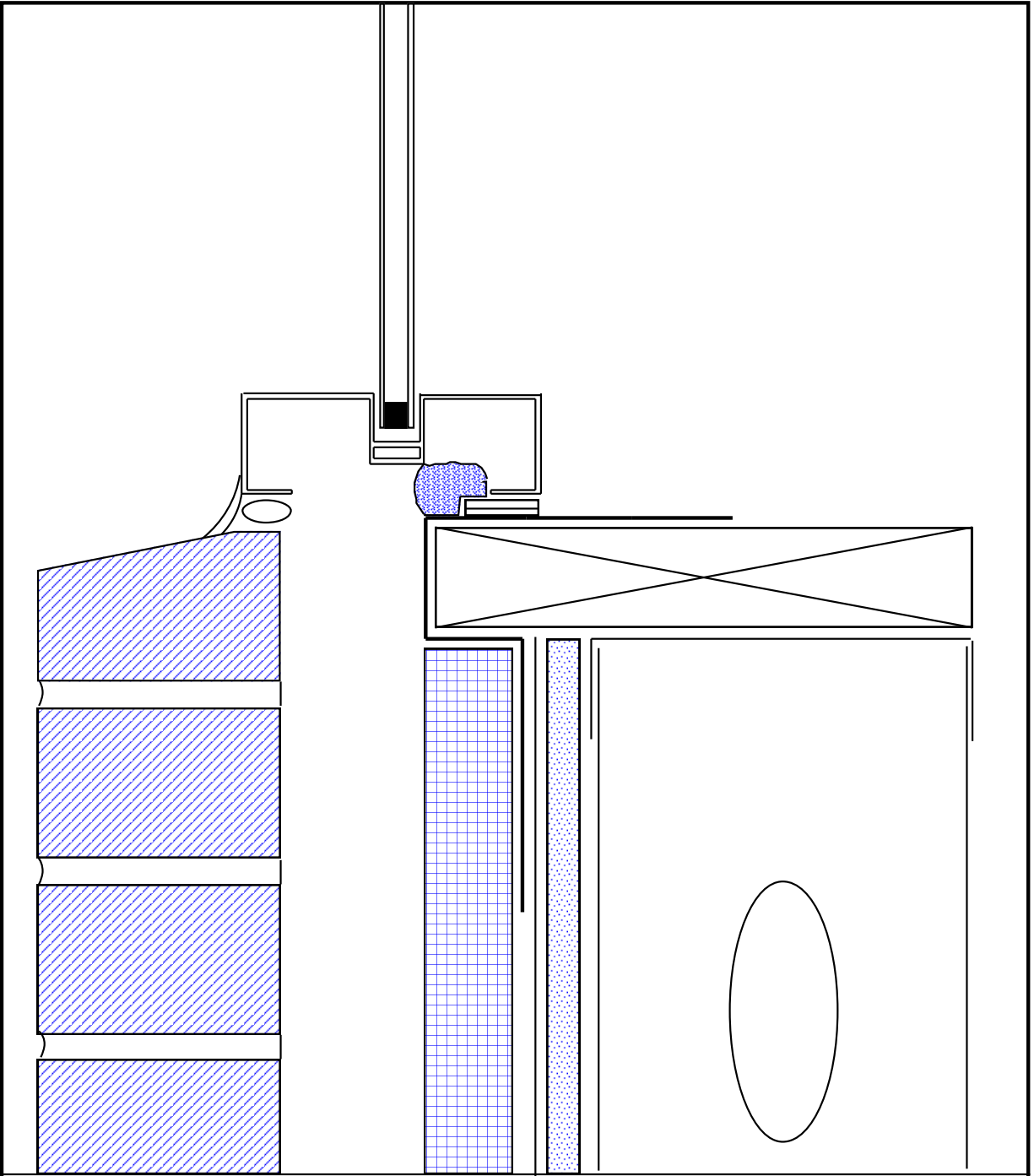
WINDOW FLASHING SYSTEM INSTALLATION: STEP 12 (OPTION 1)



EXO-TEC MANUFACTURING, INC.
294 PLEASANT ST. SUITE 203A, STOUGHTON, MA 02072

(781) 344-9794 FAX (781) 344-9823
www.exotec.biz

WINDOW FLASHING SYSTEM INSTALLATION: STEP 12 (OPTION 2)



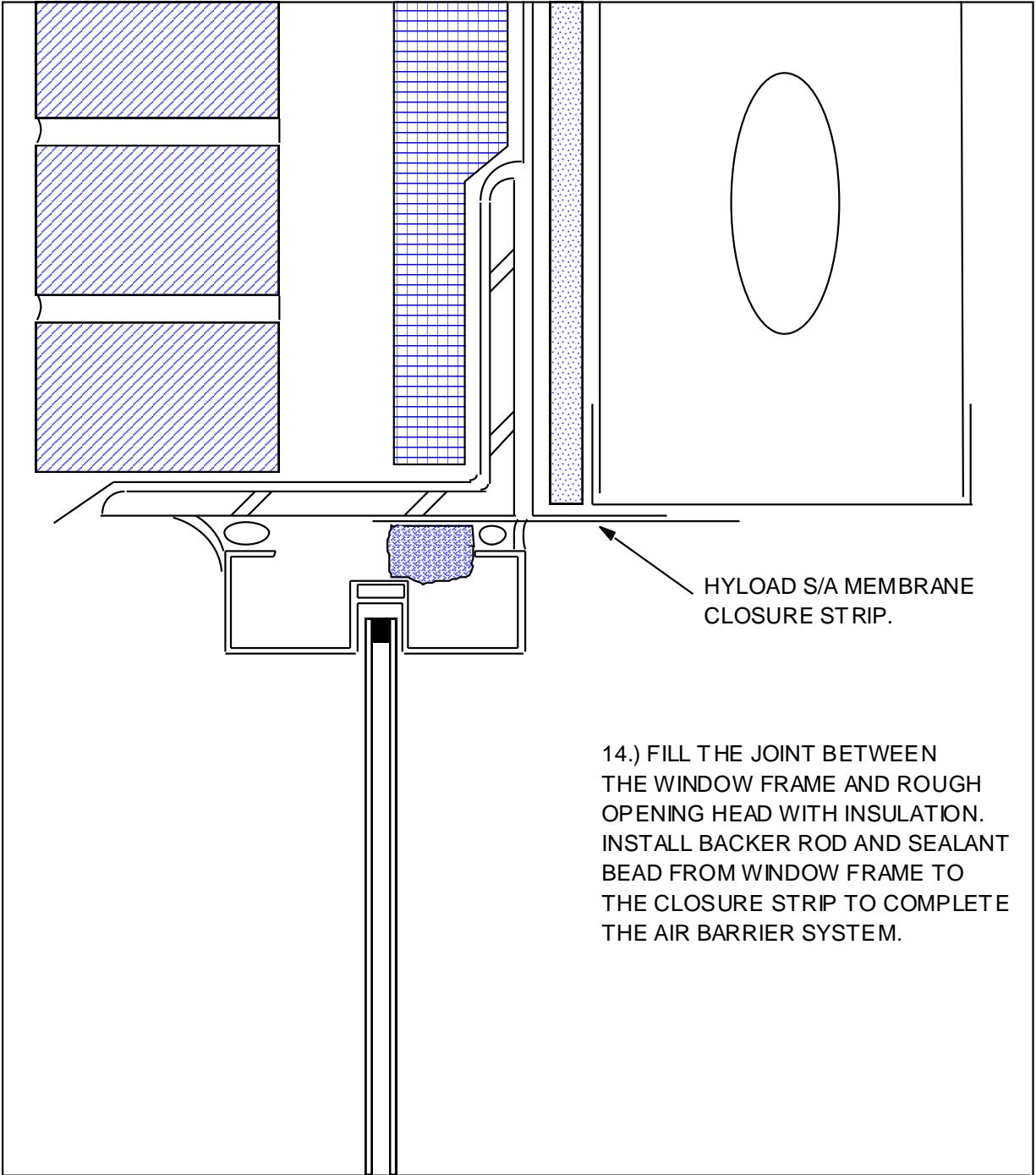
EXO-TEC MANUFACTURING, INC.

294 PLEASANT ST. SUITE 203A, STOUGHTON, MA 02072

(781) 344-9794 FAX (781) 344-9823

www.exo-tec.biz

WINDOW FLASHING SYSTEM INSTALLATION: STEP 13



HYLOAD S/A MEMBRANE
CLOSURE STRIP.

14.) FILL THE JOINT BETWEEN
THE WINDOW FRAME AND ROUGH
OPENING HEAD WITH INSULATION.
INSTALL BACKER ROD AND SEALANT
BEAD FROM WINDOW FRAME TO
THE CLOSURE STRIP TO COMPLETE
THE AIR BARRIER SYSTEM.

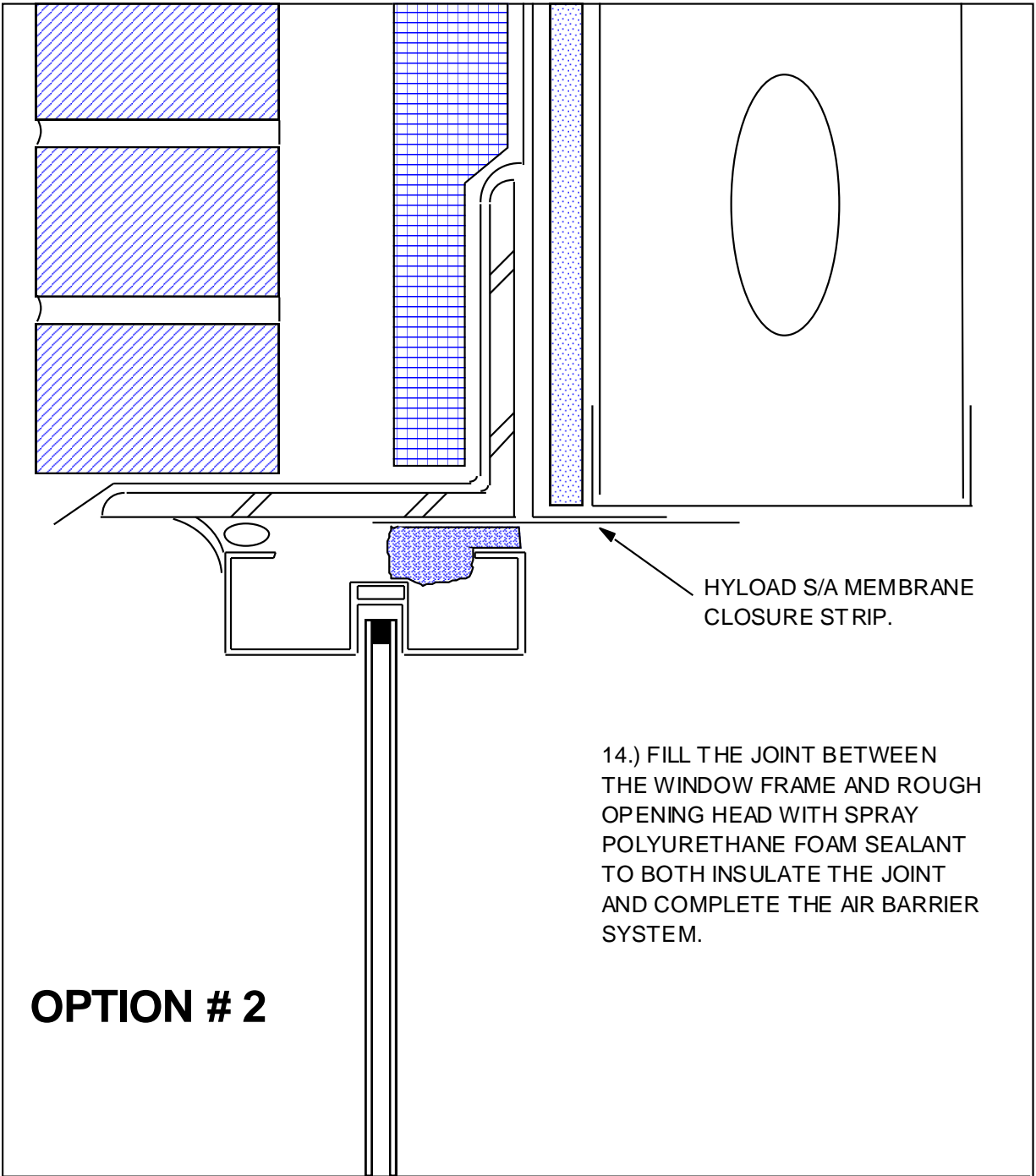
EXO-TEC MANUFACTURING, INC.

294 PLEASANT ST. SUITE 203A, STOUGHTON, MA 02072

(781) 344-9794 FAX (781) 344-9823

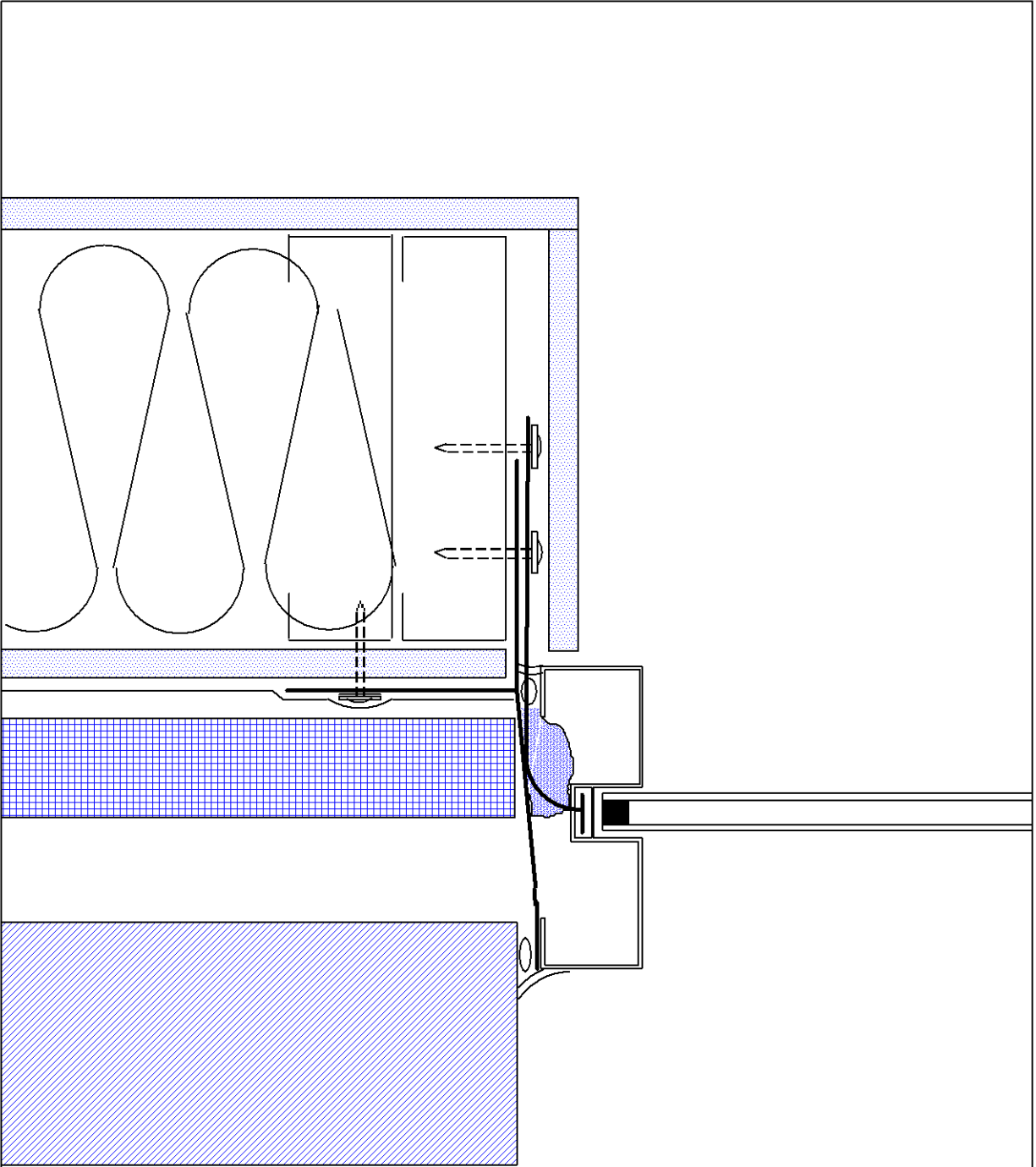
www.exo-tec.biz

WINDOW FLASHING SYSTEM INSTALLATION: STEP 14 (OPTION 1)



OPTION # 2

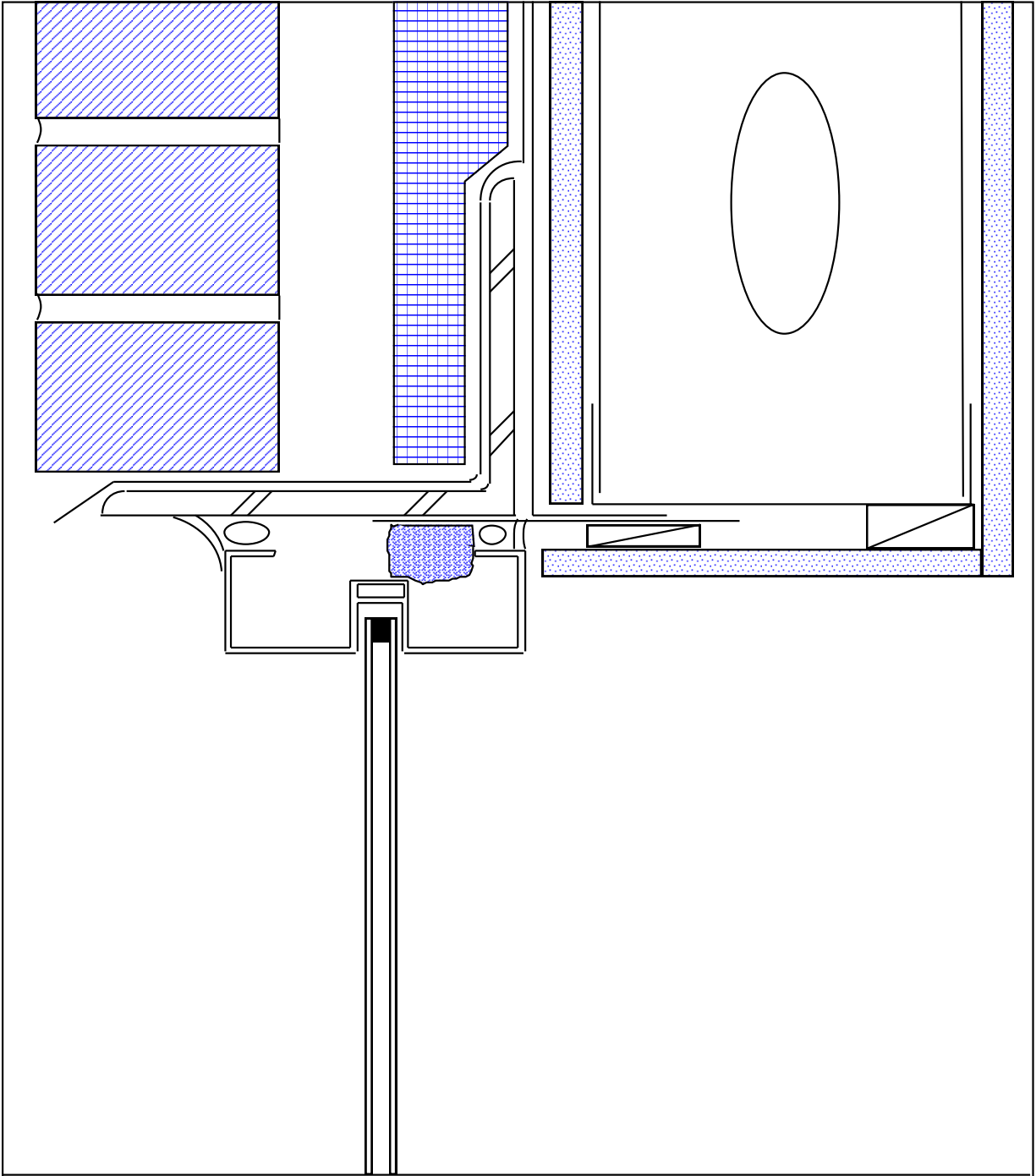
14.) FILL THE JOINT BETWEEN THE WINDOW FRAME AND ROUGH OPENING HEAD WITH SPRAY POLYURETHANE FOAM SEALANT TO BOTH INSULATE THE JOINT AND COMPLETE THE AIR BARRIER SYSTEM.



EXO-TEC MANUFACTURING, INC.
294 PLEASANT ST. SUITE 203A, STOUGHTON, MA 02072

(781) 344-9794 FAX (781) 344-9823
www.exo-tec.biz

WINDOW FLASHING SYSTEM INSTALLATION: STEP 15



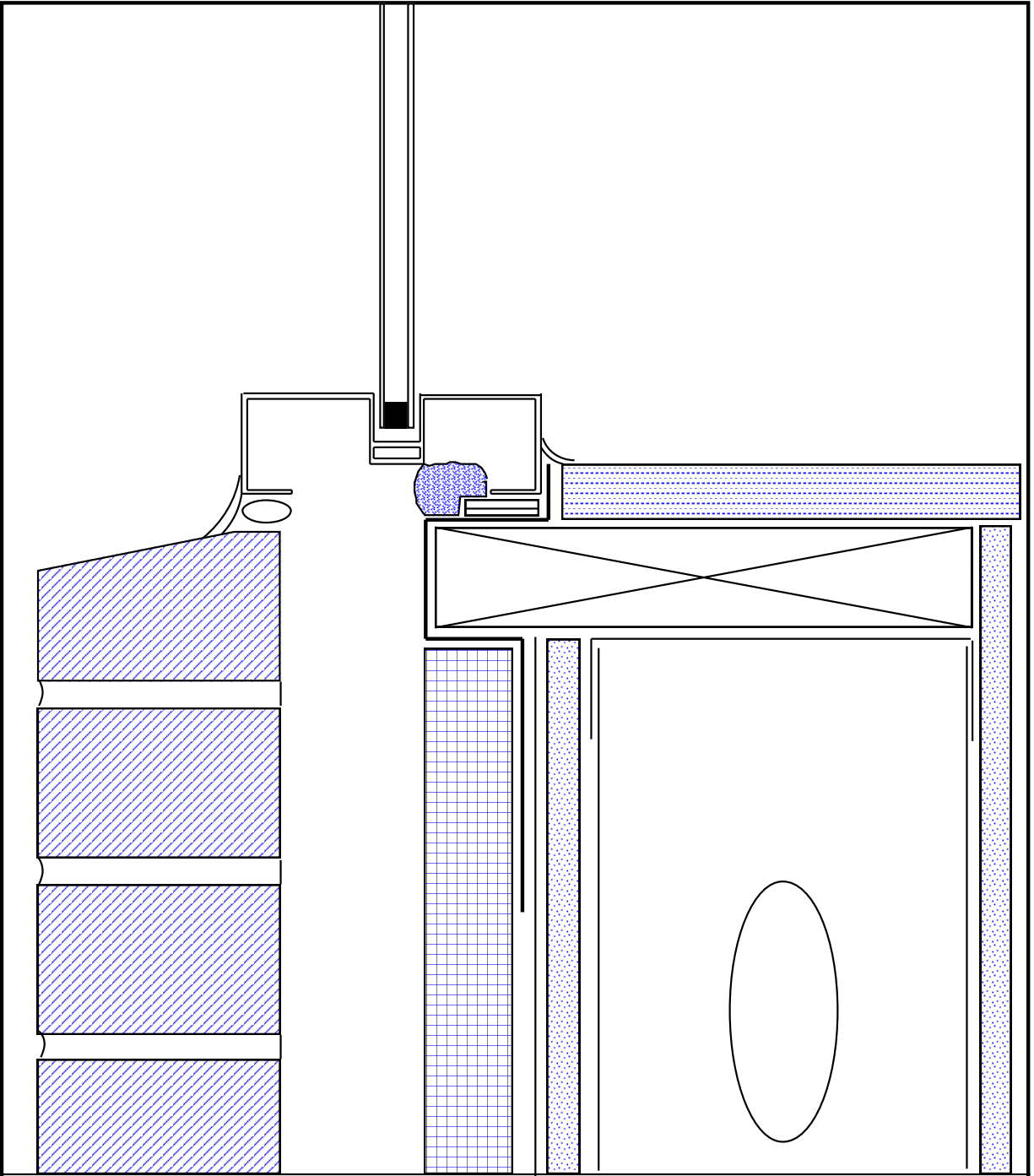
EXO-TEC MANUFACTURING, INC.

294 PLEASANT ST. SUITE 203A, STOUGHTON, MA 02072

(781) 344-9794 FAX (781) 344-9823

www.exo-tec.biz

WINDOW FLASHING SYSTEM INSTALLATION: STEP 16



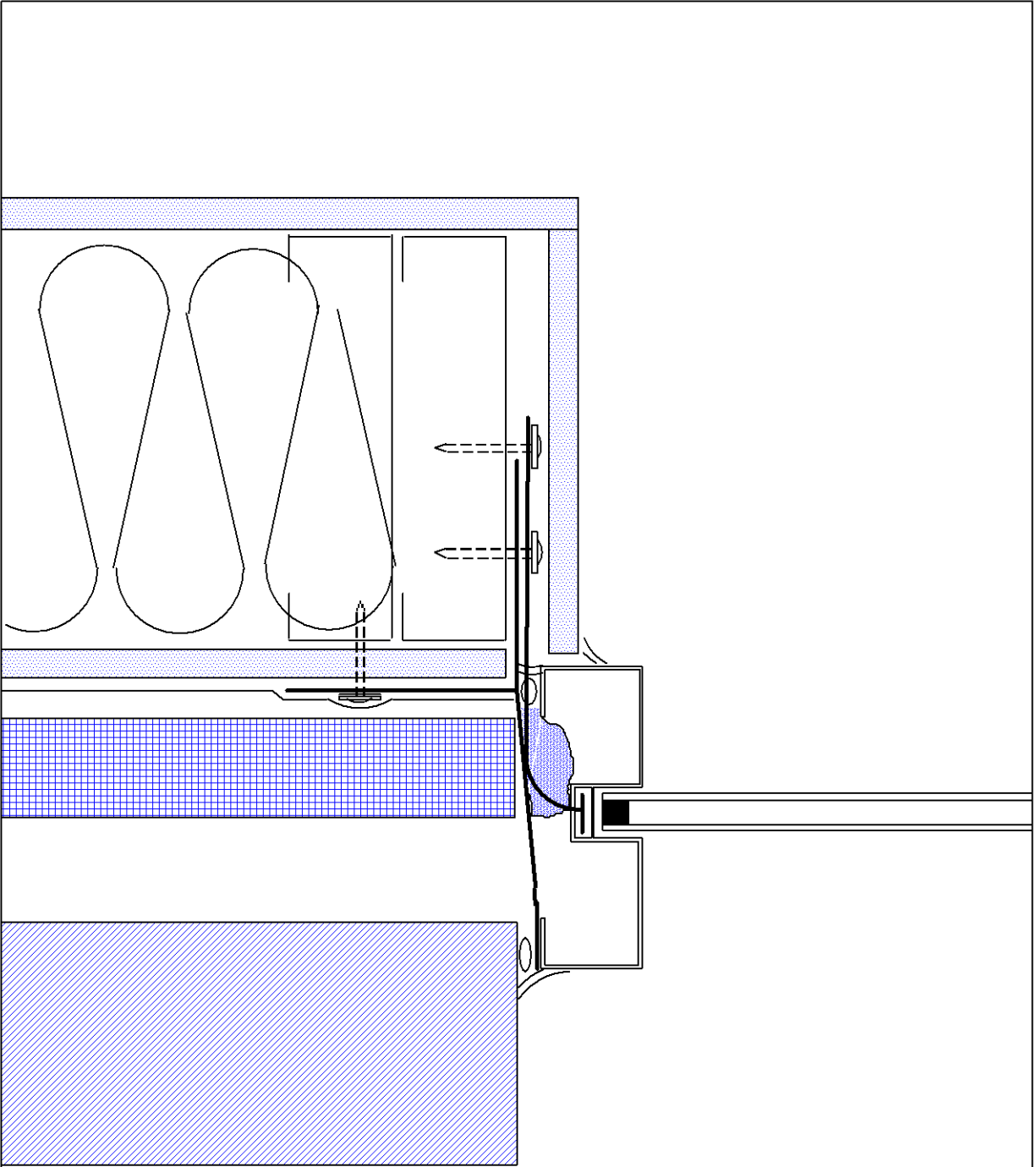
EXO-TEC MANUFACTURING, INC.

294 PLEASANT ST. SUITE 203A, STOUGHTON, MA 02072

(781) 344-9794 FAX (781) 344-9823

www.exo-tec.biz

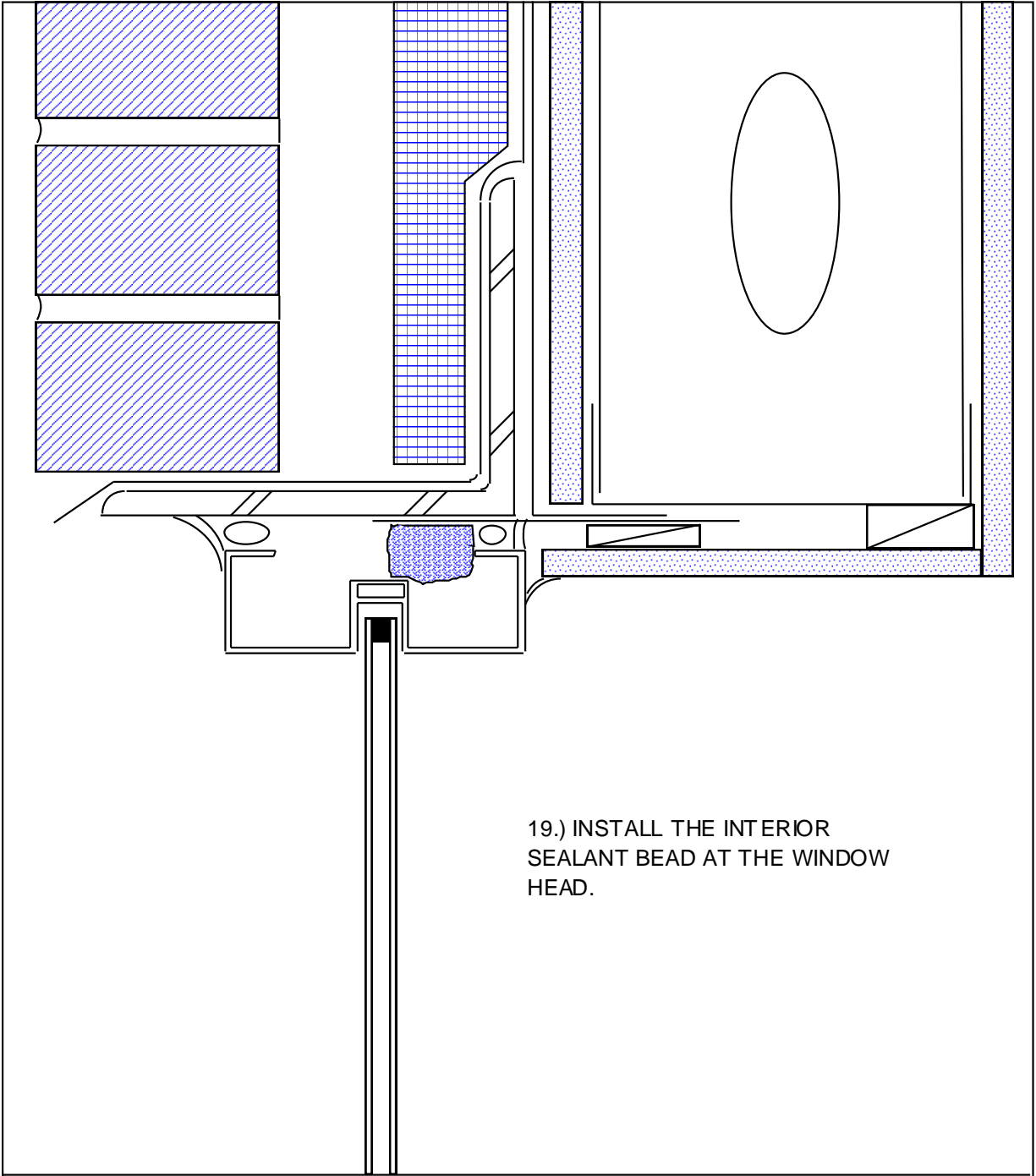
WINDOW FLASHING SYSTEM INSTALLATION: STEP 17



LENNEL SPECIALTIES CORPORATION
294 PLEASANT ST. SUITE 101, STOUGHTON, MA 02072

(781) 344-9794 FAX (781) 344-9823
www.lennelspec.co.com

WINDOW FLASHING SYSTEM INSTALLATION: STEP 18



19.) INSTALL THE INTERIOR
SEALANT BEAD AT THE WINDOW
HEAD.

EXO-TEC MANUFACTURING, INC.

294 PLEASANT ST. SUITE 203A, STOUGHTON, MA 02072

(781) 344-9794 FAX (781) 344-9823

www.exo-tec.biz

WINDOW FLASHING SYSTEM INSTALLATION: STEP 19